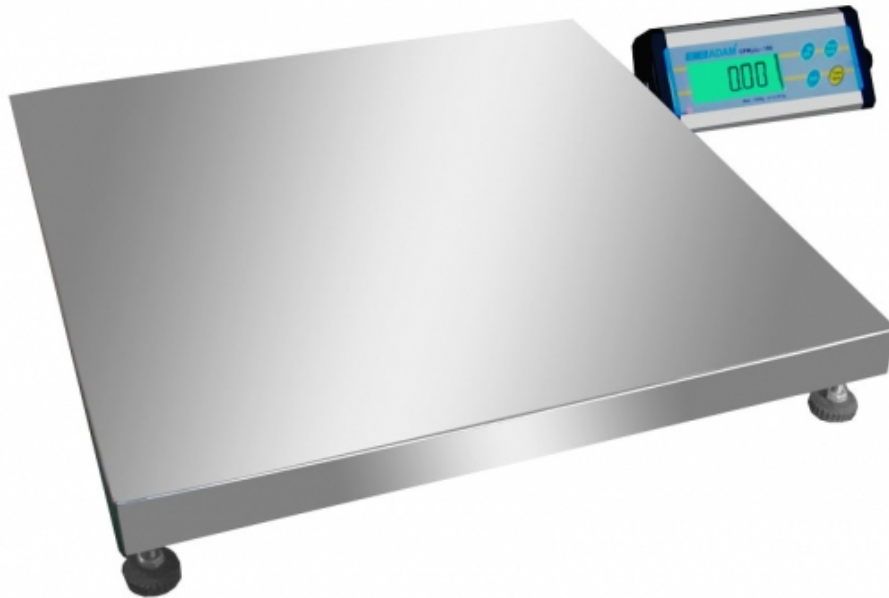


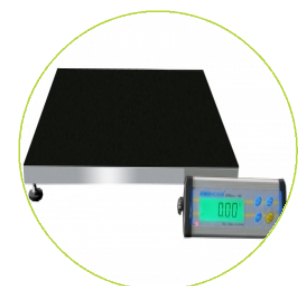
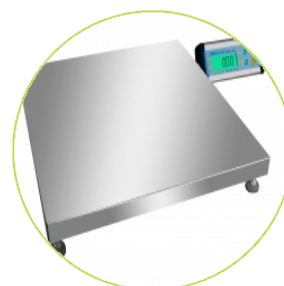
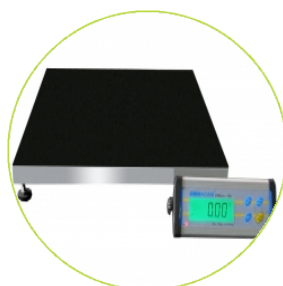
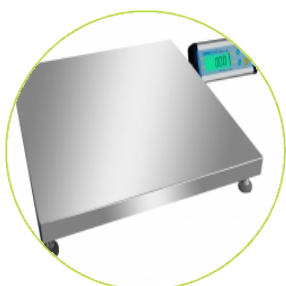
CPWplus M Weighing Scales

ADAM
Wessex Scale Co



Speed, Performance, Value - The Right Balance

- Colour coded keys
- External calibration
- Four load cell construction
- Full range tare
- Kg/ lb/ oz/ lb & oz switchable
- Hold function
- Large backlit LCD display
- Mains adapter and wall mounting kit supplied as standard
- Portable with battery power
- RS-232 bi-directional interface
- Stainless steel weighing pan with remote indicator
- Simple 4 button operation
- Tare function
- Rechargeable battery or mains power
- Animal / dynamic weighing
- Weighing



Technical Specifications

Model	CPWplus 35M	CPWplus 75M	CPWplus 150M	CPWplus 200M
Maximum capacity	35kg	75kg	150kg	200kg
Readability	10g	20g	50g	50g
Tare range	Full	Full	Full	Full
Repeatability (S.D.)	10g	20g	50g	50g
Linearity (\pm)	20g	40g	100g	100g
Platform size	500x500mm			

General Specifications

Units of measurement	Kilogram (kg), Pound (lb), Ounce (Oz), Pound-Ounce (lb-oz)
Typical stabilisation time	2-3 Sec
Interface	RS-232 bi-directional Interface
Calibration	Automatic External with user selectable calibration mass
Display	LCD with minimum 25mm digits with weight legends for kg, lb, oz and low battery, stable, zero, net weight and hold symbols, as well as ability to display lb and oz together
Operating temperature	0° - 40°C
Housing	Indicator- Aluminium, Platform- Mild Steel base and stainless steel platform
Overall dimensions (wxdxh)	500x500x40mm
Dimensions notes	Indicator: 220 x 95 x 43mm (w x d x h)
Net weight	8.5kg

Key Accessories

- Adam Printer
- Thermal Paper Roll for Adam Printer
- AdamDU - Data Collection Program
- RS-232 Cable



Supplied by

Wessex Scale Co, Lower Mill, Exford Nr Minehead Somerset TA24 7QE
 Tel: 0845 472 5345 Fax: 01643 800 299
 Email: sales@wessexscales.co.uk
 Website: www.wessexscales.co.uk

